

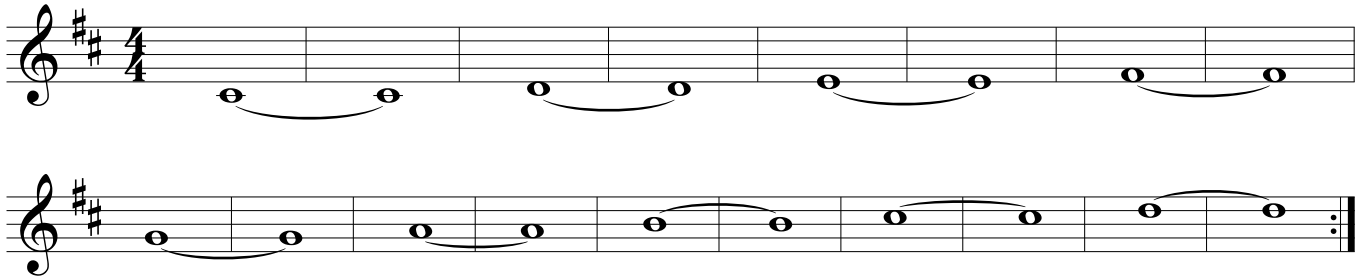
# Exercicios para o manexo do fol

[Sistema en RE]

Por:  
Jhonathan Ferreira

Aula Galicia Aberta  
Secretaría Xeral da Emigración  
Xunta de Galicia

Exercicio N°105



Exercicio N°106



Exercicio N°107



Exercicio N°108



Exercicio N°109



# Exercicios con picados combinados

[Sistema en RE]

Por:  
Jhonathan Ferreira

Aula Galicia Aberta  
Secretaría Xeral da Emigración  
Xunta de Galicia

## Exercicio Nº110



Two staves of musical notation for Exercise Nº110. The first staff begins with a treble clef, a key signature of two sharps (F# and C#), and a 4/4 time signature. The melody consists of eighth notes with slurs, and the accompaniment consists of eighth notes with slurs. The second staff continues the piece, ending with a double bar line.

## Exercicio Nº111



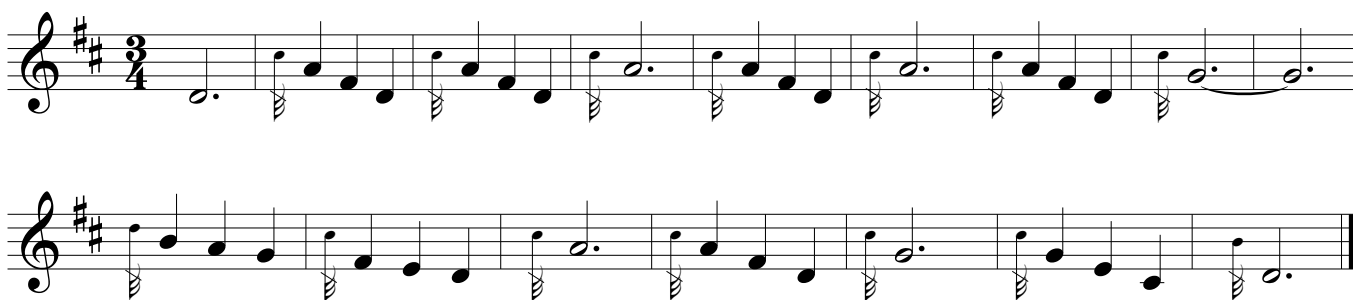
A single staff of musical notation for Exercise Nº111. It features a treble clef, a key signature of two sharps (F# and C#), and a 4/4 time signature. The melody is composed of eighth notes with slurs, and the accompaniment consists of eighth notes with slurs. The piece concludes with a double bar line.

## Exercicio Nº112



A single staff of musical notation for Exercise Nº112. It features a treble clef, a key signature of two sharps (F# and C#), and a 4/4 time signature. The melody is composed of eighth notes with slurs, and the accompaniment consists of eighth notes with slurs. The piece concludes with a double bar line.

## Exercicio Nº113



Two staves of musical notation for Exercise Nº113. The first staff begins with a treble clef, a key signature of two sharps (F# and C#), and a 3/4 time signature. The melody consists of eighth notes with slurs, and the accompaniment consists of eighth notes with slurs. The second staff continues the piece, ending with a double bar line.

## Exercicio Nº114



A single staff of musical notation for Exercise Nº114. It features a treble clef, a key signature of one flat (Bb), and a 4/4 time signature. The melody is composed of eighth notes with slurs, and the accompaniment consists of eighth notes with slurs. The piece concludes with a double bar line.

# Muiñeira do Molete

[Sistema en RE]

Aula Galicia Aberta  
Secretaría Xeral da Emigración  
Xunta de Galicia

A

B